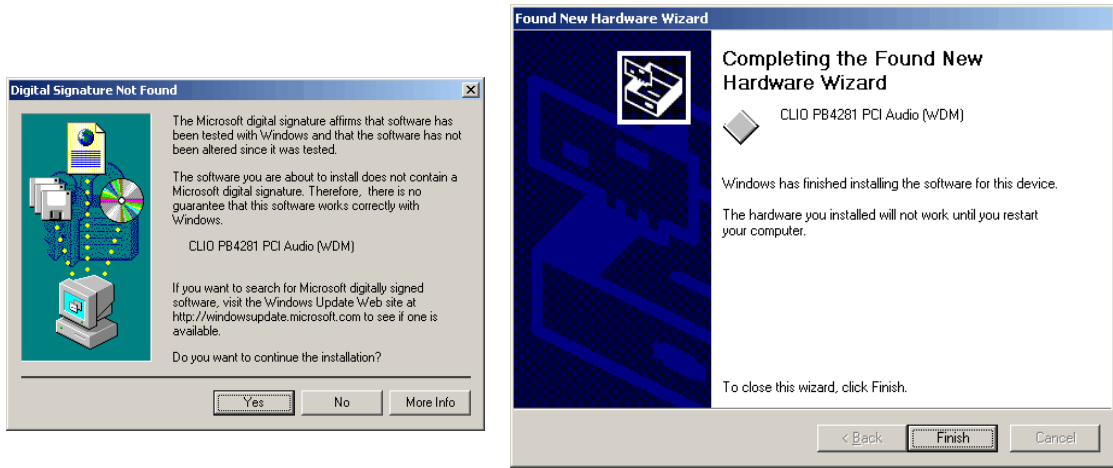


Figure 4

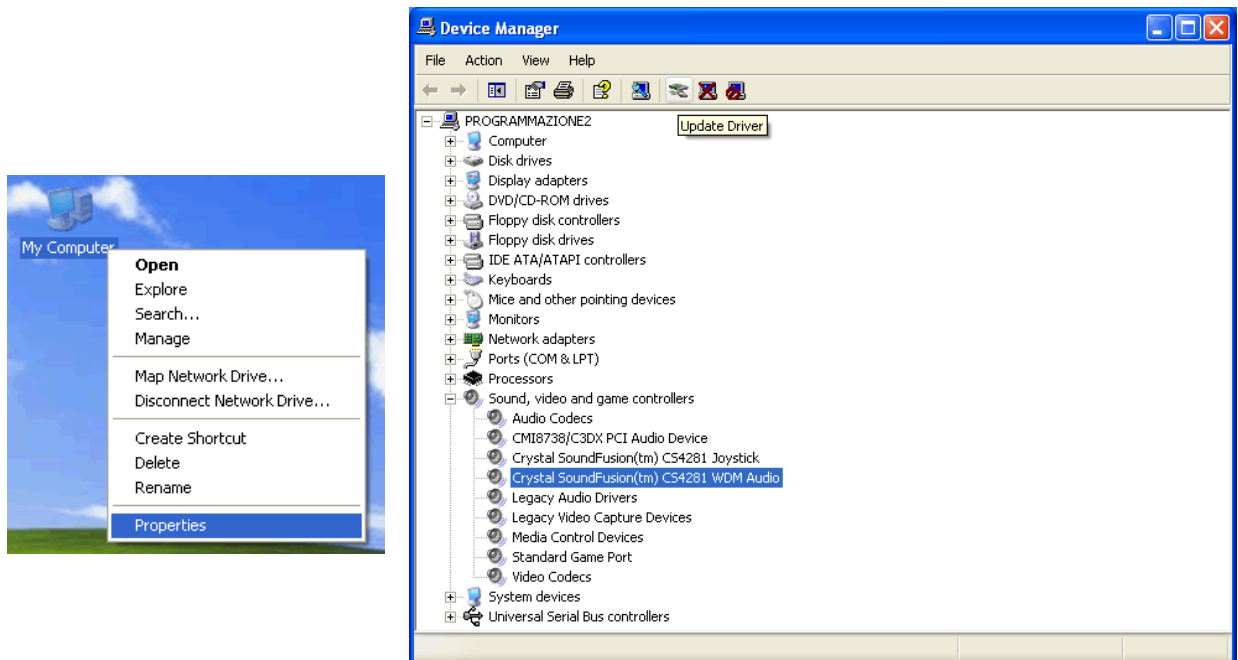


Windows XP read now.

Windows XP is the only operating system that is able to install a driver for the CLIO card; the problem is that **it is not the correct one and needs to be updated.**

Let's now check what driver XP installed. Click with the **right** mouse button on the 'My Computer' icon on the Windows desktop. Then click 'Properties', select the 'Hardware' tab and press the 'Device Manager' button as in Fig. 5.

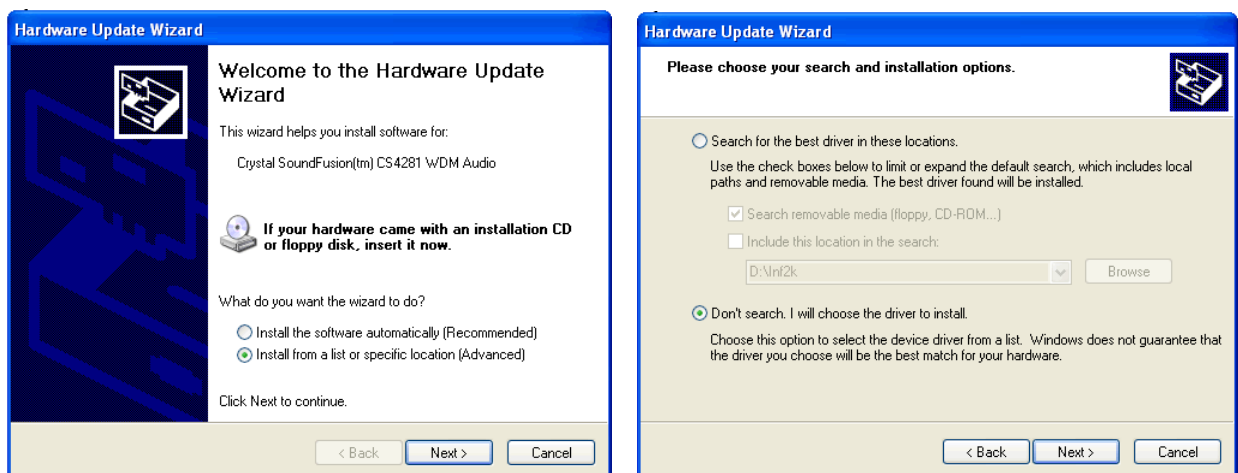
Figure 5



XP installed a driver for the Crystal hardware accelerator that the CLIO PB4281 card is using. Press the 'Update Driver' button and enter the 'Hardware Update Wizard' (Fig. 6).

Select 'Install from a list or specific location (Advanced)' and click 'Next'; then select 'Don't search. I will choose the driver to install' and click 'Next' again.

Figure 6



Insert the CLIO CD-ROM, press 'Have Disk' and choose the CLIO2K.INF file inside the \INF2K directory of the CD-ROM (see Fig. 7).

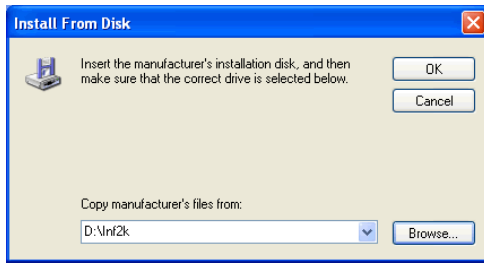
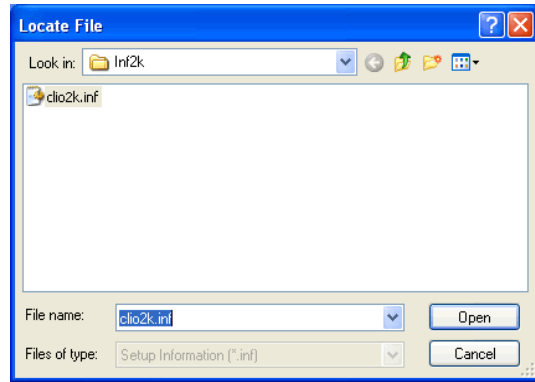


Figure 7



Ignore the message 'This driver is not digitally signed!', press **'Next'**. **Ignore** the subsequent message about Windows Logo testing, press **'Continue Anyway'** (Fig. 8). You will then reach the end of the wizard.

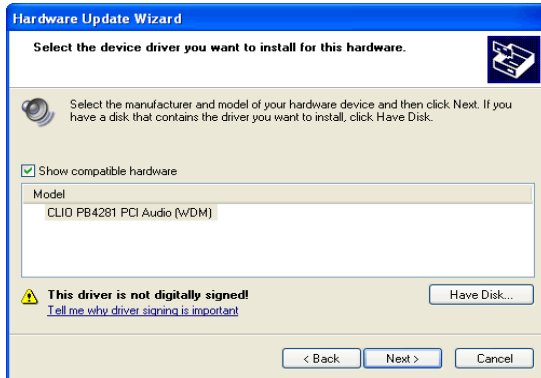
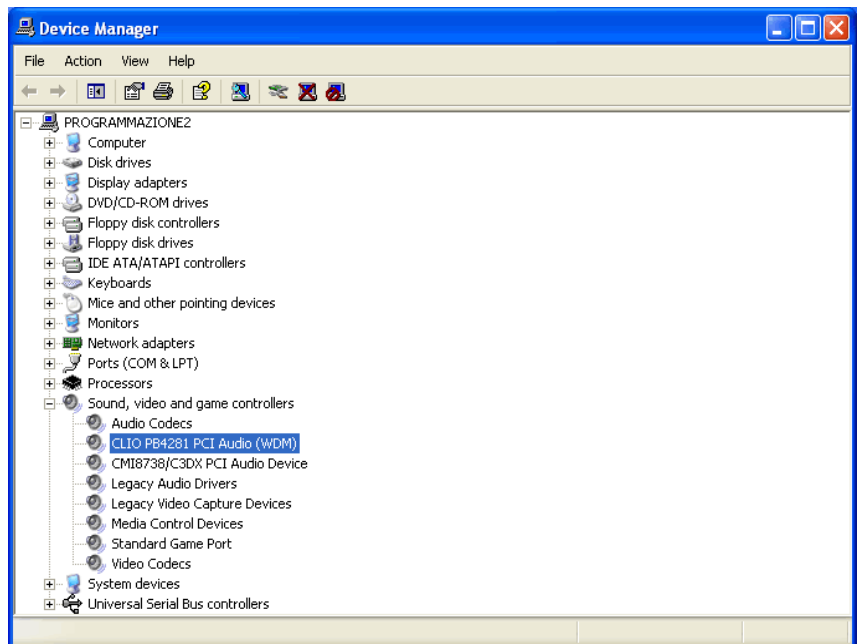


Figure 8



At last, access the Device Manager again and verify the presence of the 'CLIO PB4281 PCI Audio (WDM)' driver. **Your driver update was successful!**



3 CONNECT THE SC-02 SIGNAL CONDITIONER & INSTALL USB DRIVERS

To connect the SC-02 Signal conditioner to your PC you need the following cables:

- 1) 2 x Stereo mini jack to two RCA plugs (red plus white) audio cable.
- 2) 1 x USB cable.

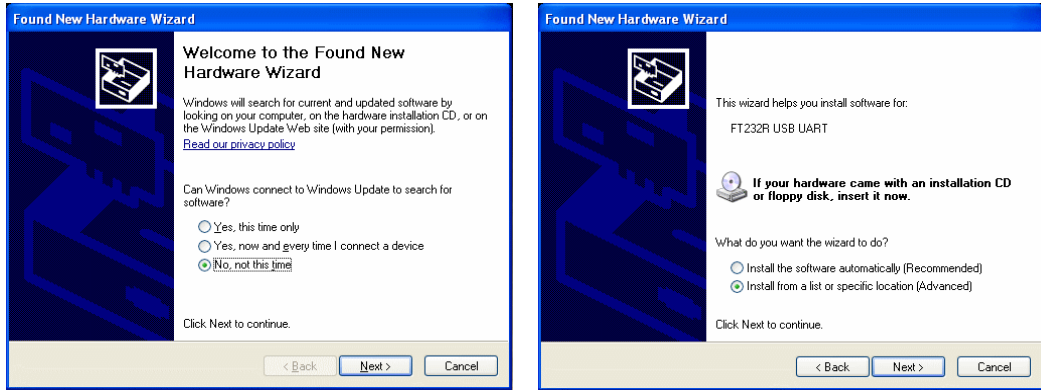
First connect the SC-02 Signal Conditioner to the PB4281 card:

- 1) Connect one audio cable from the card 'Line Out' plug to the two RCA plugs on the rear panel of SC-02 labeled 'FROM PC'; red plug channel B, white plug channel A.
- 2) Connect one audio cable from the card 'Line In' plug to the two RCA plugs on the rear panel of SC-02 labeled 'TO PC'; red plug channel B, white plug channel A.

Fig. 1 shows the audio connections as they should be realized.

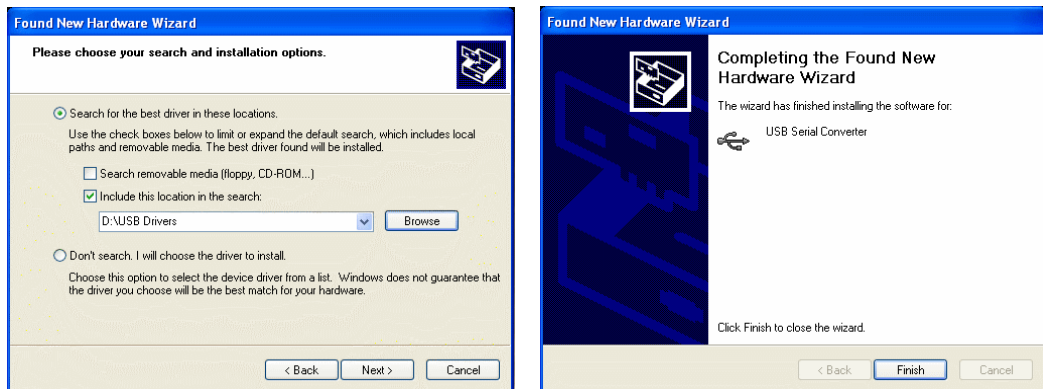
Then connect the SC-02 Signal Conditioner one free USB port of your computer and be ready to install USB drivers! You will be prompted with the dialog boxes in Fig.9. Press 'No. Not this time' and then select 'Install from a list or specific location (Advanced)'

Figure 9



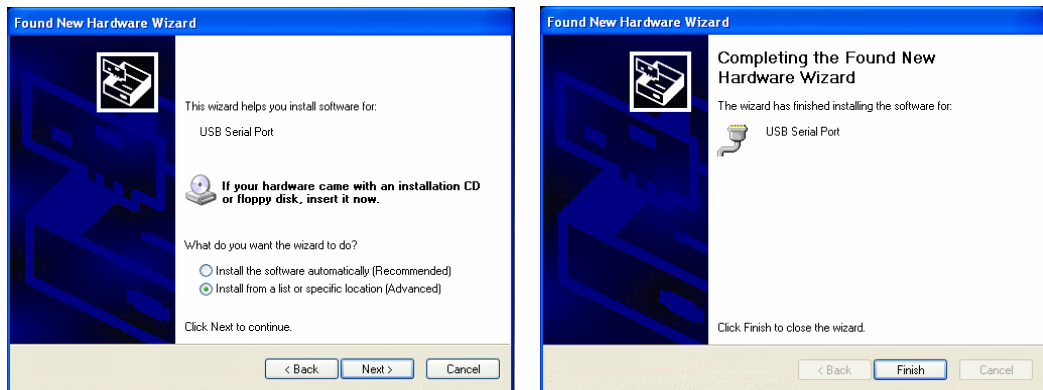
At the successive prompt Select 'Search for the best driver in these locations' and press the 'Browse...' button. Choose the USB Drivers folder inside CD-ROM (see Fig.10). It will be installed the USB Serial Converter.

Figure 10



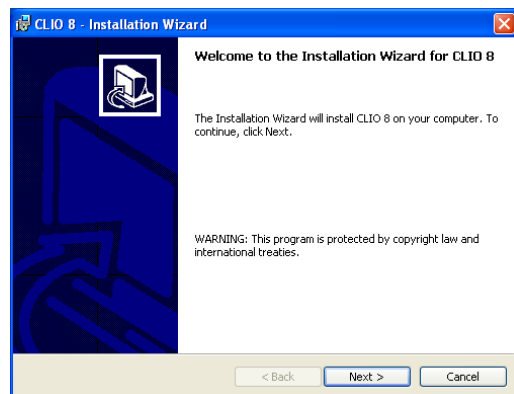
You will be prompted again: repeat the same procedure to install also the USB Serial Port (Fig.11).

Figure 11



4 INSTALL SOFTWARE

Execute the file named **setup.exe** in the CLIO 8 CD-ROM.



The procedure is completely automatic and will only request you to accept the Software End User's License Agreement and input some information in order to correctly install CLIO 8; the software installer will also check your operating system version and, in certain cases, will request you to restart Windows in order to finalise the installation.

5 READ CAREFULLY CHAPTER 3 OF THE USER'S MANUAL!