

CLIO FW-01 AND CLIO 11 INSTALLATION

❶ MINIMUM PC CONFIGURATION

The CLIO FW-01 firewire audio interface running the CLIO 11 software can be installed in any personal computer with the following minimum system requirements:

- Pentium IV processor (suggested minimum 1GHz)
- One free IEEE-1394 port
- 256 MB RAM
- 1024x786 video adapter
- Microsoft Windows XP, Vista, 7, 8 or 10
- Adobe Acrobat Reader from release 8 to release 11; do not use Reader DC.

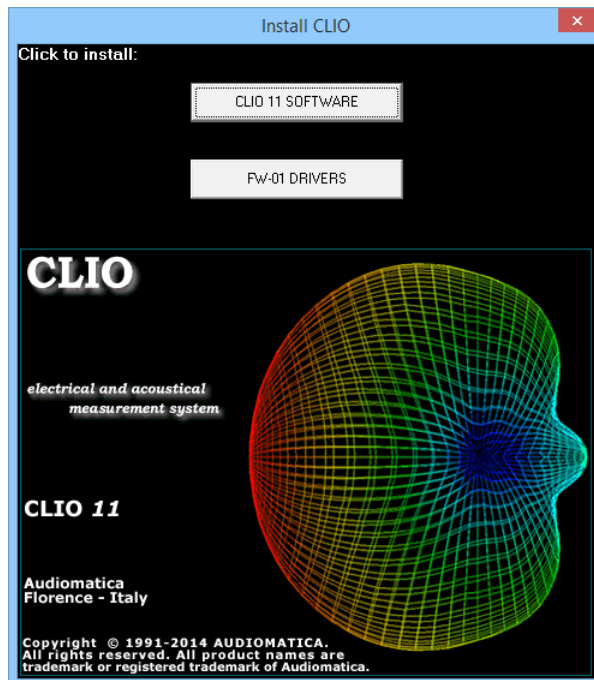
➡ **DO NOT CONNECT THE FW-01 UNIT TO THE PC UNTIL REQUESTED!**

➡ **BE SURE TO HAVE ADMINISTRATIVE RIGHTS WHEN INSTALLING!**

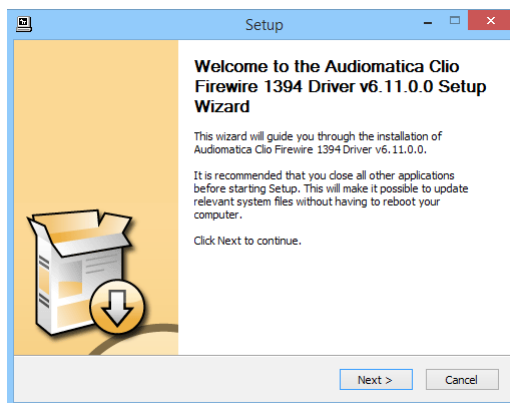
❷ FW-01 DRIVERS INSTALLATION

To install the FW-01 drivers in your computer you should follow the instructions presented below:

- 1) Insert the CLIO 11 CD ROM in the computer.
- 2) Wait for autorun application or run "Clioinstall.exe".



3) Choose "FW-01 DRIVERS" to start installation.



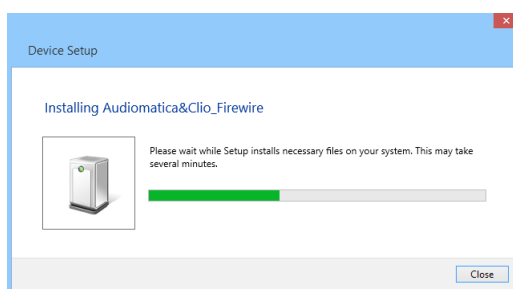
🔄 WHEN PROMPTED CONNECT THE FW-01 UNIT!



To connect the FW-01 unit to your PC you need to do the following:

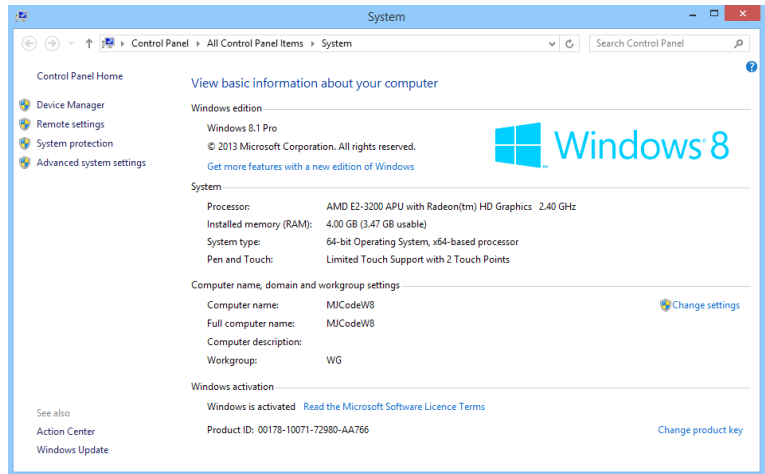
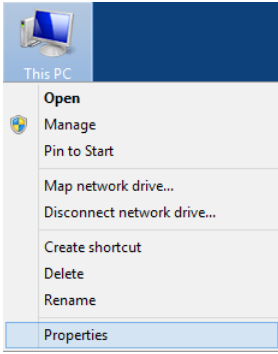
- 1) Locate an IEEE-1394 port on your PC. You may either use a standard 6-pin port (with or without power supply) or a standard 4-pin (small connector, without power supply) port.
- 2) If you use a 6-pin port use the supplied 6-pin-to-6-pin cable. If you use a 4-pin port please provide an IEEE 1394 6-pin-to-4-pin cable (often referred as i-Link).
- 3) If you use a 6-pin port verify that it is capable of power supply.
- 4) If you use a 6-pin port without power supply or a 4-pin port you must also provide a 12V external power supply.

Ignore any Microsoft's warning message about Digital Signature or Publisher and reach the end of the wizard.

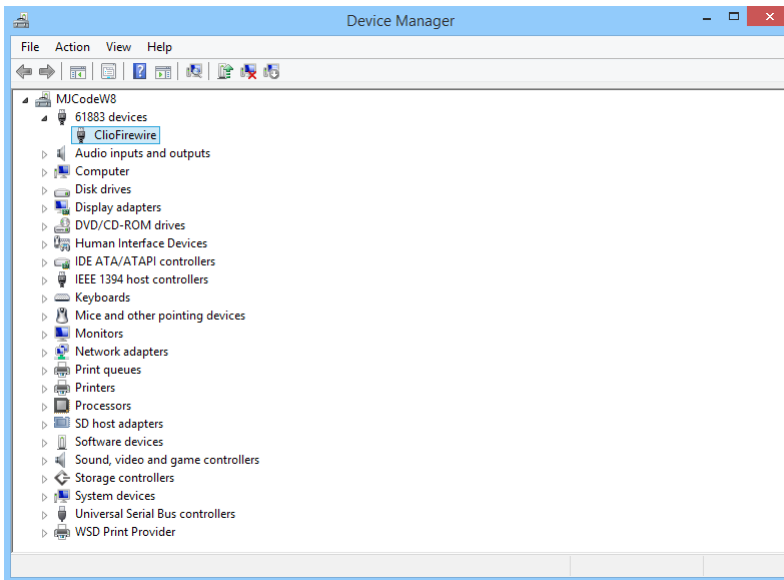


You will then reach the end of the wizard.

Let's now verify the correct installation of the FW-01 driver. Click with the **right** mouse button on the 'My Computer' icon on the Windows desktop. Then click 'Properties' and press the 'Device Manager' link as in the following figure.



Verify the presence of the 'Clio Firewire' driver under the 61883 device class.



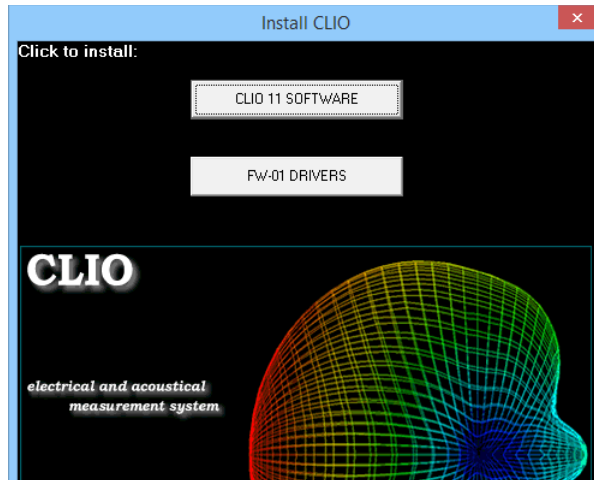
➡ **Your driver installation was successful!**

3 CLIO 11 SOFTWARE INSTALLATION

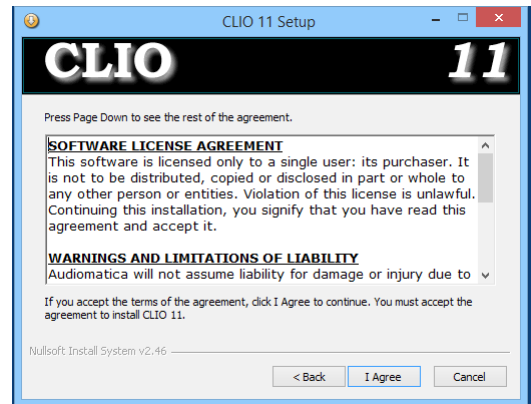
The CLIO software is provided either on its own CD-ROM or, in electronic format, as a single, self-extracting, executable file.

To install the CLIO 11 software in your computer you should follow the instructions presented below:

- 1) Insert the CLIO 11 CD ROM in the computer.
- 2) Wait for autorun application or run "Clioinstall.exe".



- 3) Choose "CLIO 11 SOFTWARE" to start installation.



The procedure is completely automatic and will only request you to accept the Software End User's License Agreement and input some information in order to correctly install CLIO 11; the software installer will also check your operating system version.

After successfully completing this procedure take note of the installation directory of CLIO (usually C:\Program Files\Audiomatica\CLIO11 or C:\Program Files (x86)\Audiomatica\CLIO11).

4 READ CAREFULLY CHAPTER 3 OF THE USER'S MANUAL!