

# CLIO & CLIOwin 7 INSTALLATION

## MINIMUM PC CONFIGURATION

- Pentium II processor (suggested minimum 350 MHz)
- One free PCI slot
- One free RS-232 serial port
- 64 MB RAM
- 1024x786 video adapter
- Microsoft Windows 98, ME, 2000 or XP
- Adobe Acrobat Reader 4



Figure 1

## 1 INSTALL THE PCI CARD

To install the CLIO PB4281 card in your computer you should follow the instructions presented below:

- 1) Disconnect the mains power cable from the PC.
- 2) Open the computer cabinet.
- 3) With the motherboard in front of you, identify a free **PCI** slot. Note that it is preferable to install the CLIO board as far away as possible from the video adapter.
- 4) Insert the CLIO board in the slot and screw it down firmly.
- 5) Close the cabinet.
- 6) Reconnect the mains cable but **don't** switch the computer on until you have connected the SC-01 Signal Conditioner.

## 2 CONNECT THE SC-01 SIGNAL CONDITIONER

To connect the SC-01 Signal conditioner to your PC you need the following cables:

- 1) 1 x RS-232 DB9 Male to DB9 Female 9-poles cable as in Fig.2. If the RS-232 connector available on your PC is a DB25 Male, then you also need a DB25 to DB9 serial adapter; **do not use a mouse adapter** as they usually don't connect all the serial contacts.
- 2) 2 x Stereo mini jack to two RCA plugs (red plus black) audio cable. In case you don't use the supplied cables please note that, on the market, are present already made cables that have reversed connection.
- 3) 1 x DB15 Male to DC plug.

To connect the SC-01 Signal Conditioner to the PB4281 card do the following:



Figure 2



- 1) Connect one audio cable from the card 'Line Out' plug to the two RCA plugs on the rear panel of SC-01 labeled 'FROM PC'; red plug channel B, black plug channel A.
- 2) Connect one audio cable from the card 'Line In' plug to the two RCA plugs on the rear panel of SC-01 labeled 'TO PC'; red plug channel B, black plug channel A.
- 3) Connect the DC supply cable from the DB15 connector on the card to the dc plug on the rear of SC-01.
- 4) Connect the RS-232 cable from SC-01 to a free RS-232 port in your computer.

**Fig.1 shows the audio and dc connections as they should be realized.**

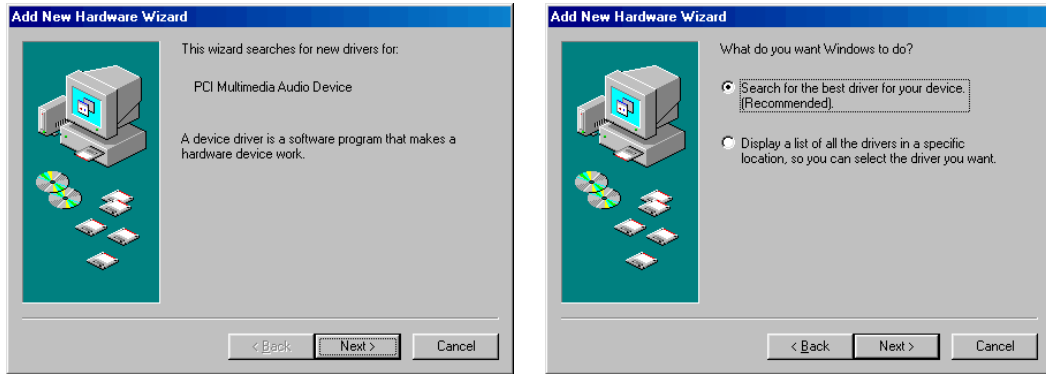
## 3 SWITCH THE PC ON

As soon as Windows is started the 'Add New Hardware Wizard' automatically detects the CLIO card.

## ➔ Windows 98 or Me read now; Windows 2000 or XP go next.

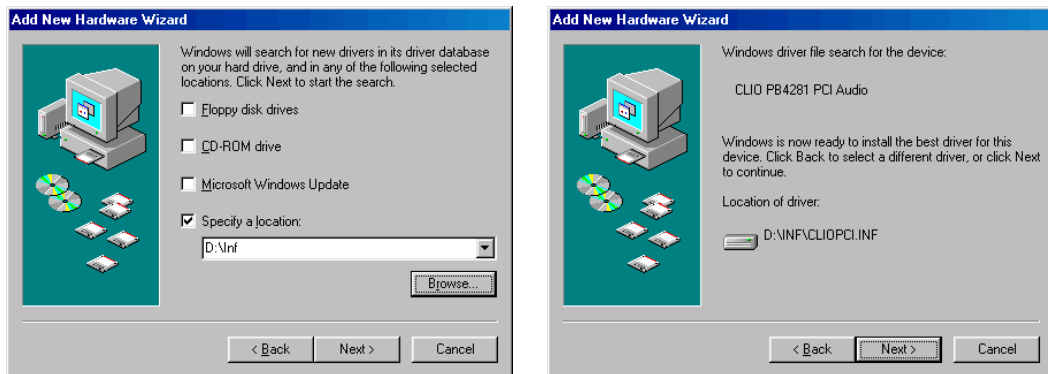
You will be prompted with the dialog boxes in Fig.4. Press 'Next' and then select 'Search for the best driver for your device (Recommended)'.

Figure 4



At the successive prompt Select 'Specify a location', then insert the CLIOwin CD-ROM in the CD-ROM drive and press the 'Browse...' button. Choose the CLIOPCI.INF file inside the \INF directory inside the CD-ROM (see Fig.5).

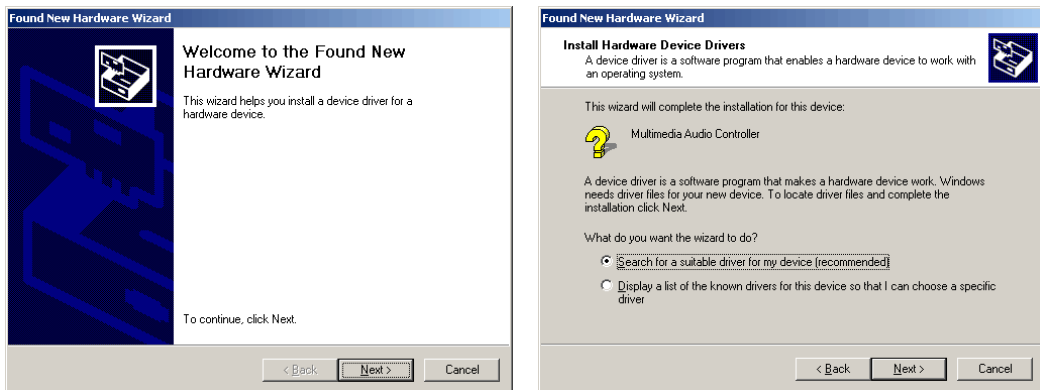
Figure 5



## ➔ Windows 2000 read now, Windows XP go next.

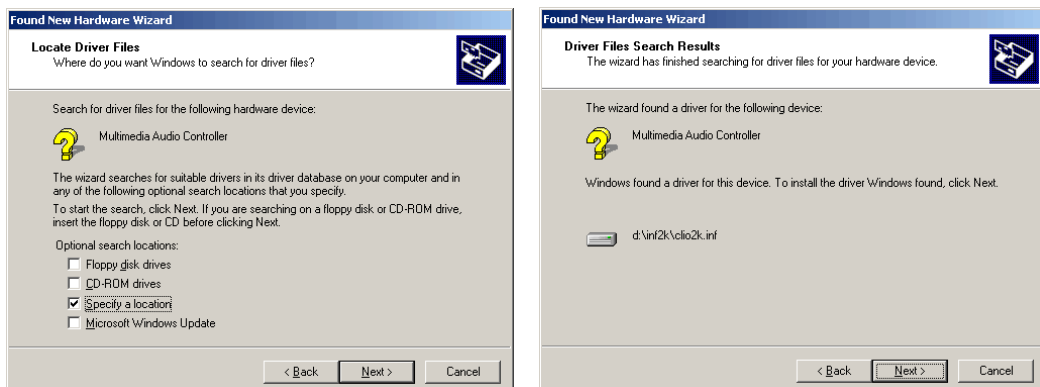
You will be prompted with the dialog boxes in Fig.6. Press 'Next' and then select 'Search for a suitable driver for my device (Recommended)'.

Figure 6



At the successive prompt Select 'Specify a location', then insert the CLIOwin CD-ROM in the CD-ROM drive and press the 'Browse...' button. Choose the CLIO2K.INF file inside the \INF2K directory inside the CD-ROM (see Fig.7).

Figure 7



**Ignore** Microsoft's warning message about Digital Signature, answer 'Yes' to the prompt and reach the end of the wizard.

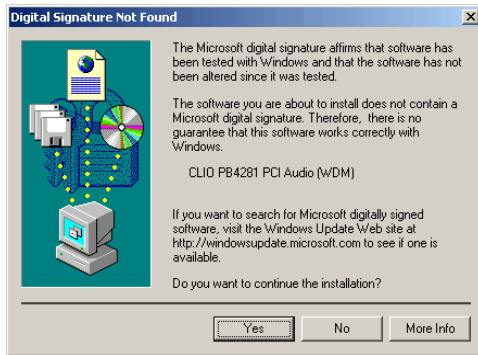
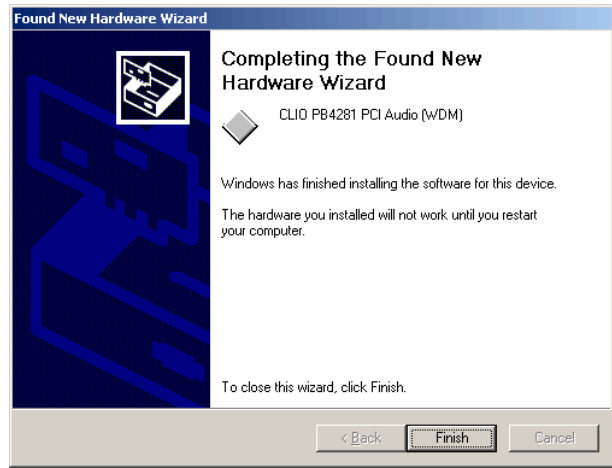


Figure 8



## ➔ Windows XP read now.

Windows XP is the only operating system that is able to install a driver for the CLIO card; the problem is that **it is not the correct one and needs to be updated.**

Let's now check what driver XP installed. Click with the **right** mouse button on the 'My Computer' icon on the Windows desktop. Then click 'Properties', select the 'Hardware' tab and press the 'Device Manager' button as in Fig. 9.

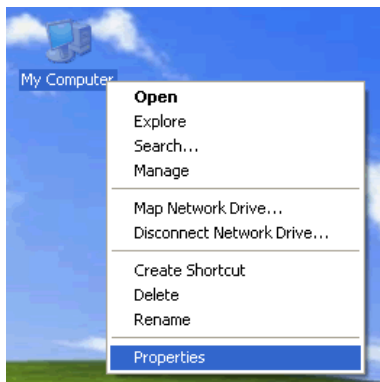
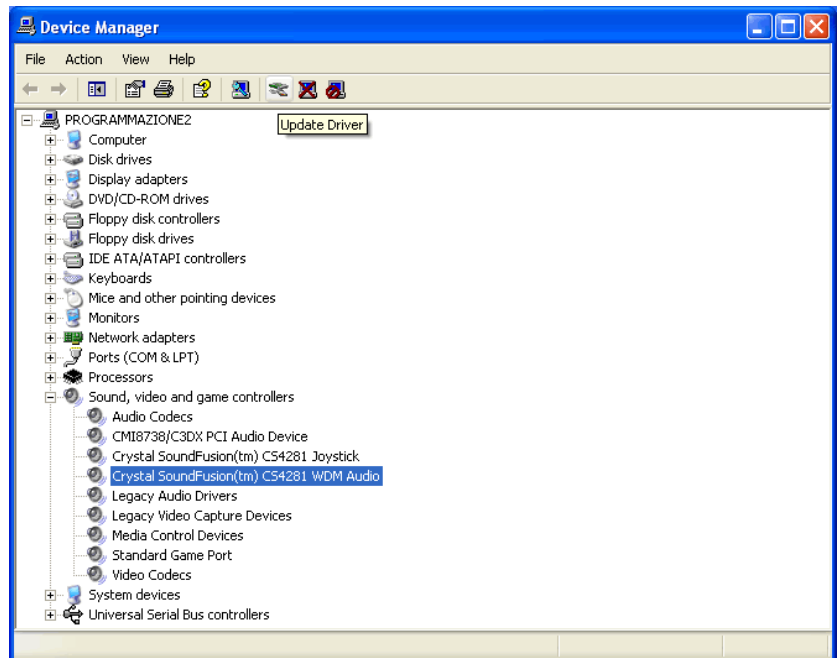


Figure 9

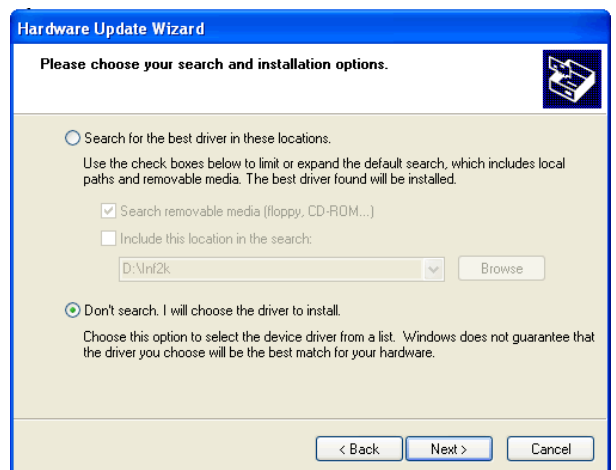


XP installed a driver for the Crystal hardware accelerator that the CLIO PB4281 card is using. Press the 'Update Driver' button and enter the 'Hardware Update Wizard' (Fig. 10).

Select 'Install from a list or specific location (Advanced)' and click 'Next'; then select 'Don't search. I will choose the driver to install' and click 'Next' again.



Figure 10



Insert the CLIOwin CD-ROM, press 'Have Disk' and choose the CLIO2K.INF file inside the \INF2K directory of the CD-ROM (see Fig. 11).

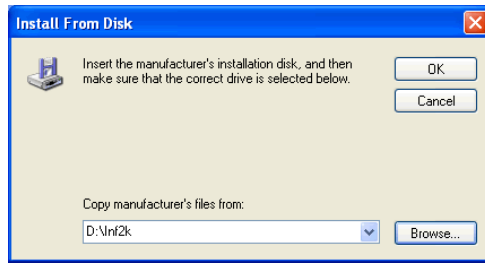
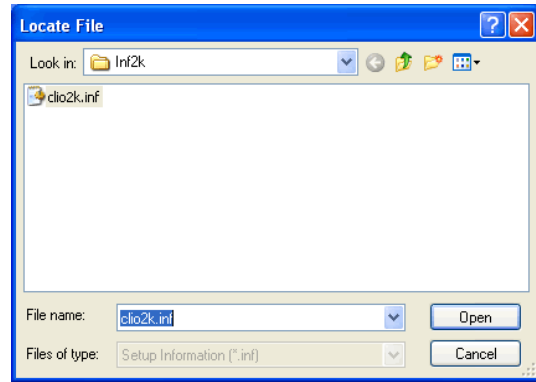


Figure 11



**Ignore** the message 'This driver is not digitally signed!', press **'Next'**. **Ignore** the subsequent message about Windows Logo testing, press **'Continue Anyway'** (Fig. 12). You will then reach the end of the wizard.

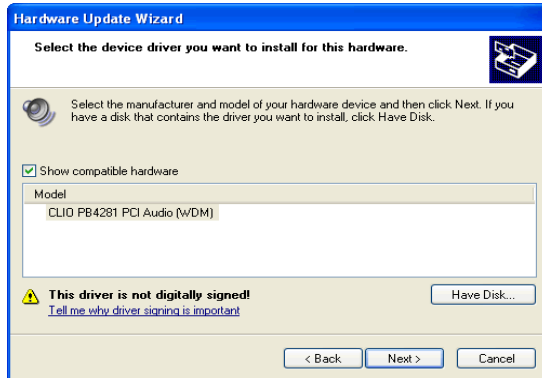
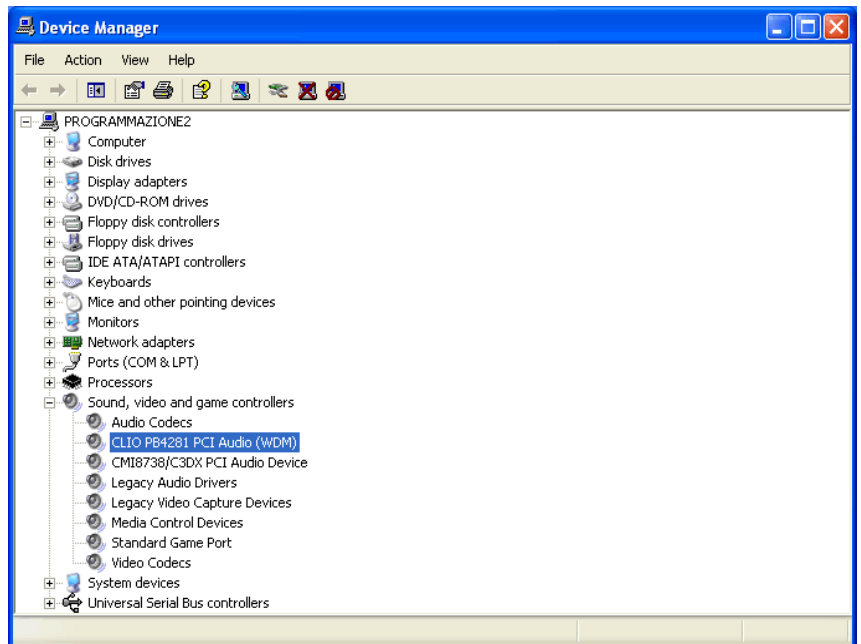
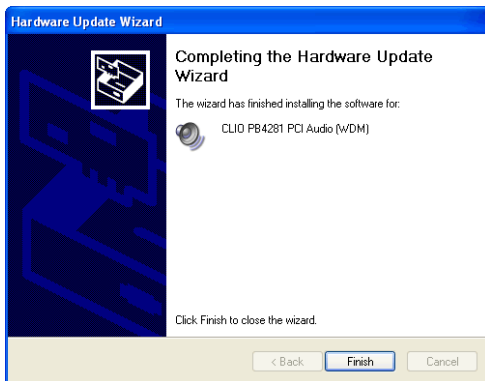


Figure 12



At last, access the Device Manager again and verify the presence of the 'CLIO PB4281 PCI Audio (WDM)' driver. **Your driver update was successful!**

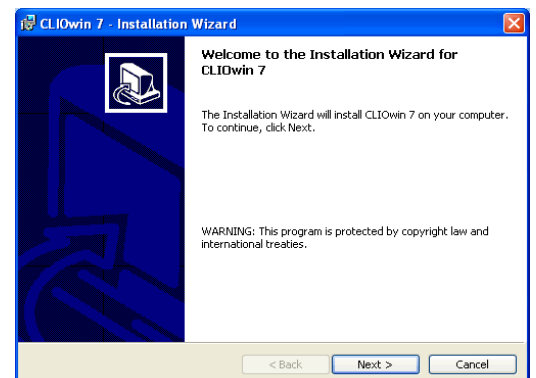


## 4 INSTALL SOFTWARE

Execute the file named **setup.exe** in the CLIOwin 7 CD-ROM.



The procedure is completely automatic and will only request you to accept the Software End User's License Agreement and input some information in order to correctly install CLIOwin 7; the software installer will also check your operating system version and, in certain cases, will request you to restart Windows in order to finalise the installation.



## 5 READ CAREFULLY CHAPTER 3 OF THE USER'S MANUAL!