

# CLIO FW-01 & CLIO 10 INSTALLATION

## MINIMUM PC CONFIGURATION

- Pentium IV processor (suggested minimum 1 GHz)
- One free IEEE-1394 port
- 256 MB RAM
- 1024x786 video adapter
- Microsoft Windows XP
- Adobe Acrobat Reader 4



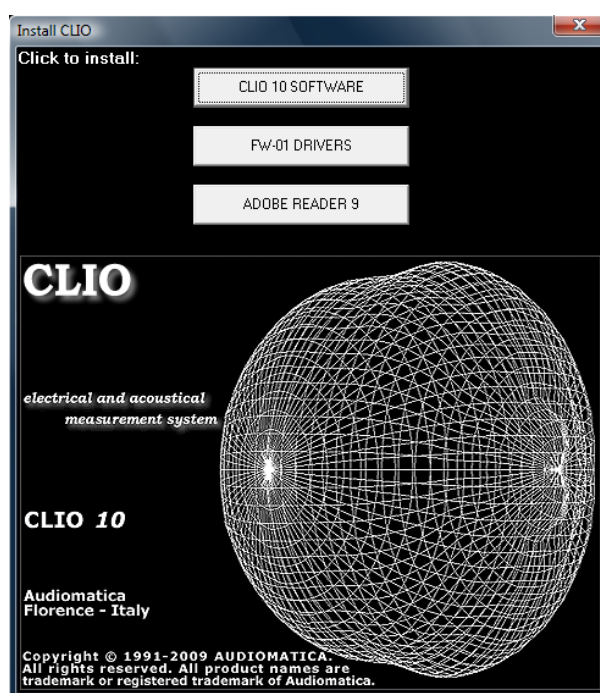
Figure 1

**➔ DO NOT CONNECT THE FW-01 UNIT TO THE PC, FOLLOW STEP 1!**

## **1** INSTALL THE FW-01 DRIVERS

To install the FW-01 drivers in your computer you should follow the instructions presented below:

- 1) Insert the CLIO 10 CD ROM in the computer.
- 2) Wait for autorun application or run "Clioinstall.exe".



- 3) Choose "FW-01 DRIVERS" to start installation.

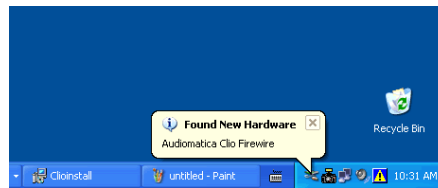
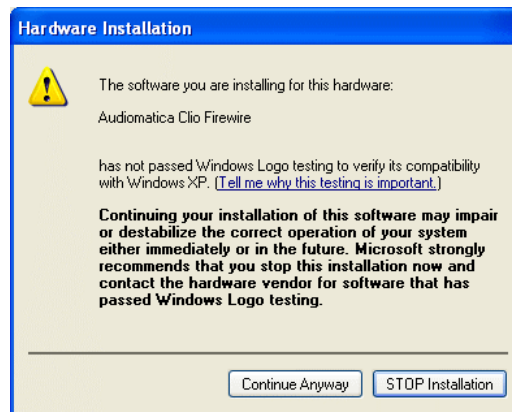
## **2** WHEN PROMPTED CONNECT THE FW-01 UNIT!

To connect the FW-01 unit to your PC you need to do the following:

- 1) Locate an IEEE-1394 port on your PC. You may either use a standard 6-pin port (with or without power supply) or a standard 4-pin (small connector, without power supply) port.
- 2) If you use a 6-pin port use the supplied 6-pin-to-6-pin cable. If you use a 4-pin port please provide an IEEE 1394 6-pin-to-4-pin cable (often referred as i-Link).
- 3) If you use a 6-pin port verify that it is capable of power supply.
- 4) If you use a 6-pin port without power supply or a 4-pin port you must also provide a 12V external power supply.

## ➔ Windows XP read now; Windows Vista go next.

**Ignore** Microsoft's warning message about Digital Signature, answer 'Yes' to the prompt and reach the end of the wizard.



You will then reach the end of the wizard.

Let's now verify the correct installation of the FW-01 driver. Click with the **right** mouse button on the 'My Computer' icon on the Windows desktop. Then click 'Properties', select the 'Hardware' tab and press the 'Device Manager' button as in Fig. 2.

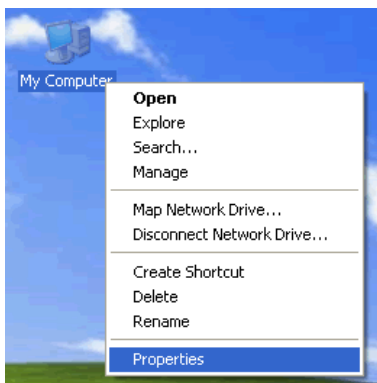
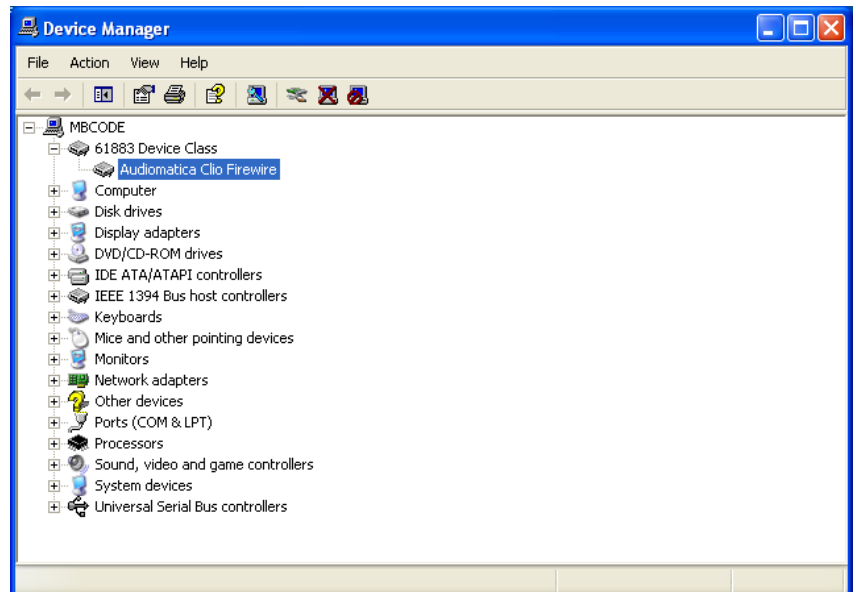


Figure 2



Verify the presence of the 'Audiomatica Clio Firewire' driver under the 61883 device class.

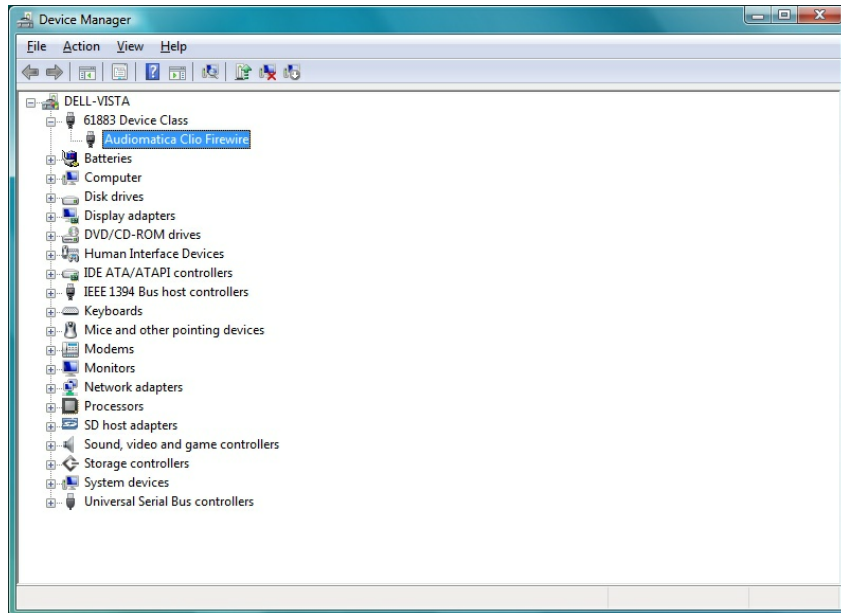
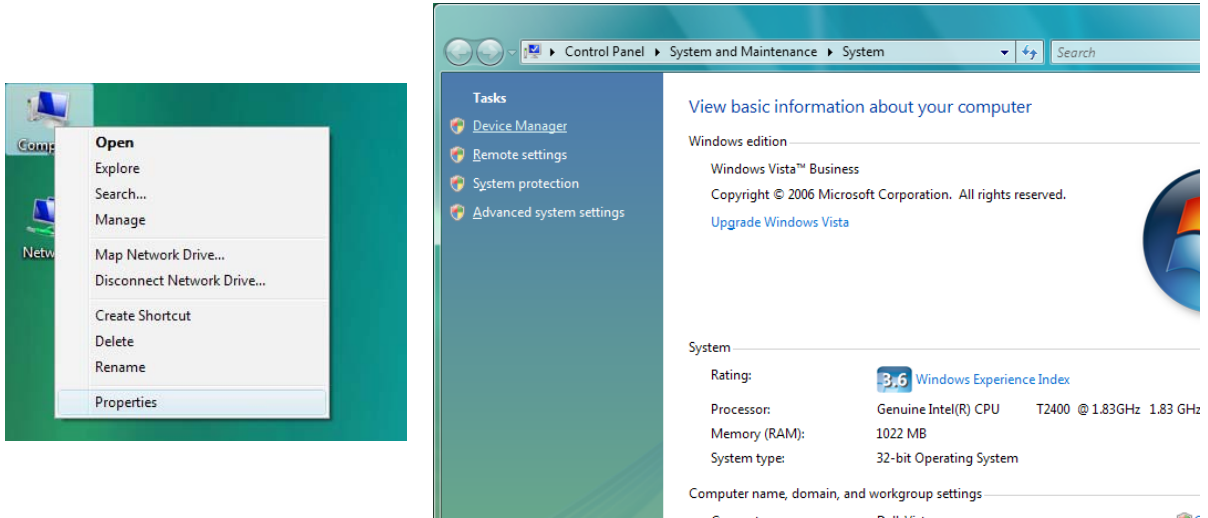
**Your driver installation was successful!**

## Windows Vista read now.

The wizard will automatically install Clio Firewire drivers.

Let's now verify the correct installation of the FW-01 driver. Click with the **right** mouse button on the 'My Computer' icon on the Windows desktop or on the Start Menu. Then click 'Properties', press the 'Device Manager' link as in figure 3.

Figure 3



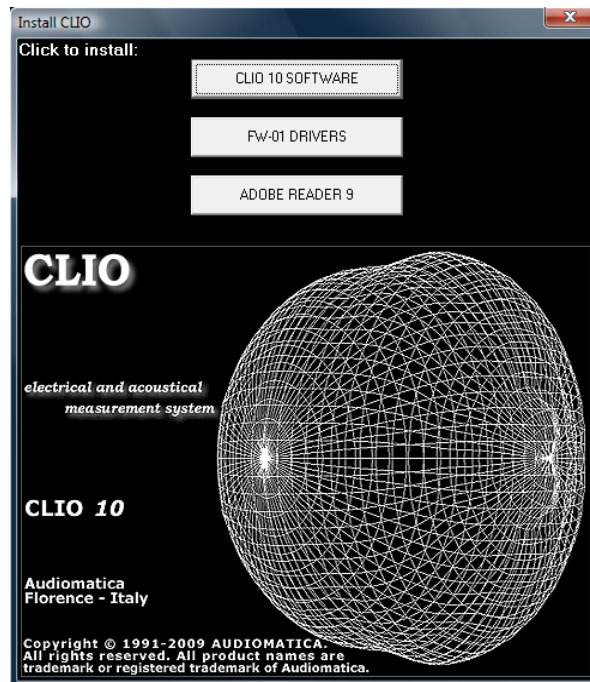
Verify the presence of the 'Audiomatica Clio Firewire' driver under the 61883 device class.

**Your driver installation was successful!**

### 3 INSTALL SOFTWARE

To install the CLIO 10 software in your computer you should follow the instructions presented below:

- 1) Insert the CLIO 10 CD ROM in the computer.
- 2) Wait for autorun application or run "Clioinstall.exe".



- 3) Choose "CLIO 10 SOFTWARE" to start installation.

The procedure is completely automatic and will only request you to accept the Software End User's License Agreement and input some information in order to correctly install CLIO 10; the software installer will also check your operating system version.

### 4 READ CAREFULLY CHAPTER 3 OF THE USER'S MANUAL!