

6 DISK MENU AND FILES MANAGEMENT

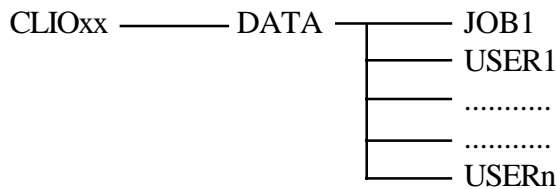
6.1 INTRODUCTION

As you might expect from its title, this chapter deals with the functions that result in read or write access to and from the hard disk. Setup, Calibration and Exit functions, although not logically tied to disk operations, are also present in this menu as they are of such common use.

Before we begin examining each item on this menu, we strongly recommend that you read through the chapter 5 describing the use of CLIO's "hot keys". Amongst other things, the hot keys allow the Load and Save commands to be quickly accessed from every other menu in the program.

6.2 DATA FILES ORGANISATION

The CLIO program is organised in a rather rigid structure on the hard disk, and this does not allow the user to wander around the directories. Data files containing measurements obtained by the user are gathered under the DATA subdirectory (which must in all cases be named as such), and under further subdirectories which the user may define whose prototype is the JOB1 directory (also obligatory). The JOB1 subdirectory is automatically created by the installation program.




At the same level as that of the JOB1 directory, other directories may be created from within CLIO by means of the Mkdir menu option found under the Disk command on the main menu bar. After a new directory has been created it may be made current through the Chdir menu option. All data files will be loaded or saved within the current directory.

Last but not least, it is not possible to remove any kind of file and load or save files on floppy disks from within the program.

6.3 LOADING FILES

Loading a file is performed either as a **startup option** to configure your CLIO working environment (see 7.2) or **from within each measurement control panel** pressing the dedicated hot key or clicking on the appropriate title bar button (see 5.3 and 5.4).

 When you are inside a control panel you may press **F3** or click on the "LOAD" icon; the Load

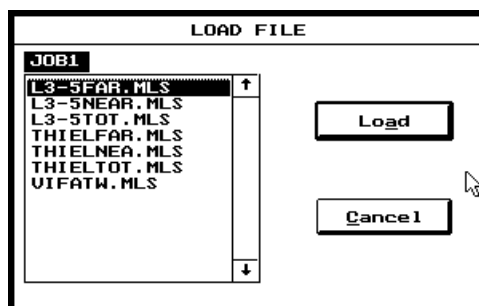


FIGURE 6.1 – The Load File dialog box

File dialog box appears as in Fig. 6.1 (as an example from the MLS Analyze control panel). This dialog box displays a list of files all of which have the same extension used in that particular control panel.

As a reference the file name extensions that CLIO uses are:

Fft: measurement files obtained through the Fft menu.

Mls: measurement files obtained through the MLS Analyze menu.

Wtf: measurement files obtained through the Mls Waterfall menu.

Frs: measurement files obtained through the Sinusoidal Frequency Response menu.

Imp: measurement files obtained through the Sinusoidal Impedance menu.

Sml: measurement files obtained through the Sinusoidal Parameters menu.

Dst: measurement files obtained through the Sinusoidal Distortion menu.

Pol: measurement files obtained through the Sinusoidal Polar menu.

Rta: measurement files obtained through the RTA menu.


T60: measurement files obtained through the Acoustics RT60 menu.

Leq: measurement files obtained through the Acoustics Leq menu.

Spe: measurement files obtained through the Tools Scope menu.

To load the desired file, select it by using either the arrow keys on the keyboard or the mouse. Then either click the Load button, press the underlined letter L, or give a double-click with the mouse on the selected file name in the file list. It is possible to load, in sequence, files of all types, and these will be plotted once the related control panel has been accessed.

6.4 SAVING FILES

 When you are inside a control panel, and some measurement data are present in memory, you may press **F2** or click on the “SAVE” icon to recall the Save File window (Fig. 6.2).

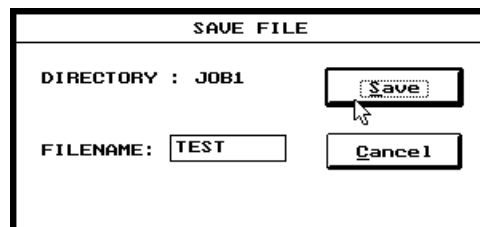


FIGURE 6.2 – The Save File dialog box

The mode of operation is the same as that described for the Load File window. As might be expected, the filename extensions are also the same. You will automatically be prompted for the name of the file to be saved.

Should there already be a file with the same name and extension, you will be asked to confirm the save

operation. The directory in which the file is saved is the current active directory (see the Chdir and Mkdir menu commands for further details). Aside from the measurement itself, additional relevant information will also be saved. This includes a comment that can be added by means of the About button, as well as several settings related to the measurement.

6.5 Mkdir

This command creates new work subdirectories that will be put under the DATA directory. All new directories are at the same level as the JOB1 directory which is created by the installation program. Therefore, it is possible to place sets of measurements into different subdirectories. When the CLIO program is first loaded, the default directory where measurements and files of all extensions are saved is JOB1. The same effect may be obtained, when you are inside a control panel, pressing the **F6** Hot Key.

6.6 Chdir

This command is used to change the current directory where all measurements and files with different extensions will be saved to or loaded from. In order to be able to change to a particular directory, it must of course exist, and it will usually have been created using the Mkdir command. The same effect may be obtained, when you are inside a control panel, pressing the **F5** Hot Key.

When exiting from CLIO, the current directory will be saved in the CLIO.STP file. When the CLIO program is re-loaded, the last selected directory will be automatically selected.

6.7 Setup

Refer to Section 7.4 “THE DISK Setup CHOICE” for a detailed explanation of this choice.

6.8 Calibration

Refer to Section 7.6 “CALIBRATING CLIO” for a detailed explanation of this choice.

6.8 Exit

This command ends the CLIO work session.

